

## Swiss Diamond Knives cryo immuno

Topographic contrast of ultrathin cryo sections for correlative superresolution light and electron microscopy

Ask us for more information  
Your Diatome Team



Figs.

a – g:  
Correlative super-resolution  
light and electron microscopy  
of Tokuyasu cryo sections from  
mouse kidney.

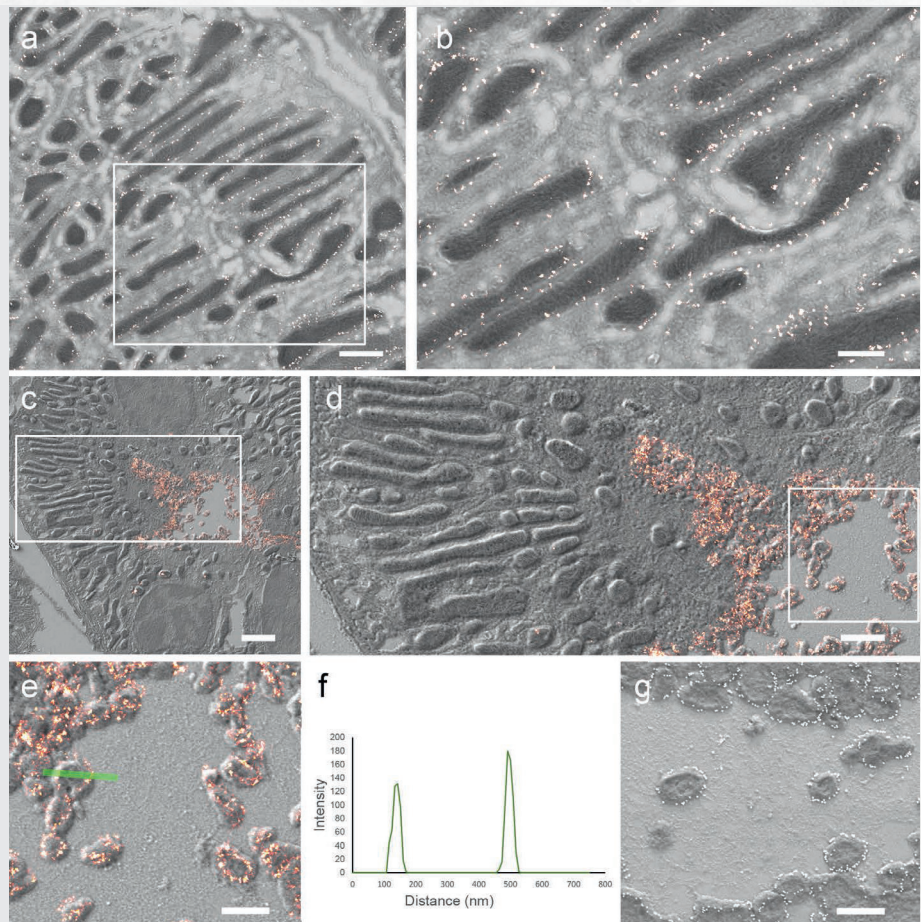
a – b:  
Tom20 protein is expressed in  
outer membranes of mitochon-  
dria.

c – f:  
pNCC is localized at plasma  
membranes and in microvilli.

g:  
Similar results are obtained with  
immunogold on the expression  
of pNCC.

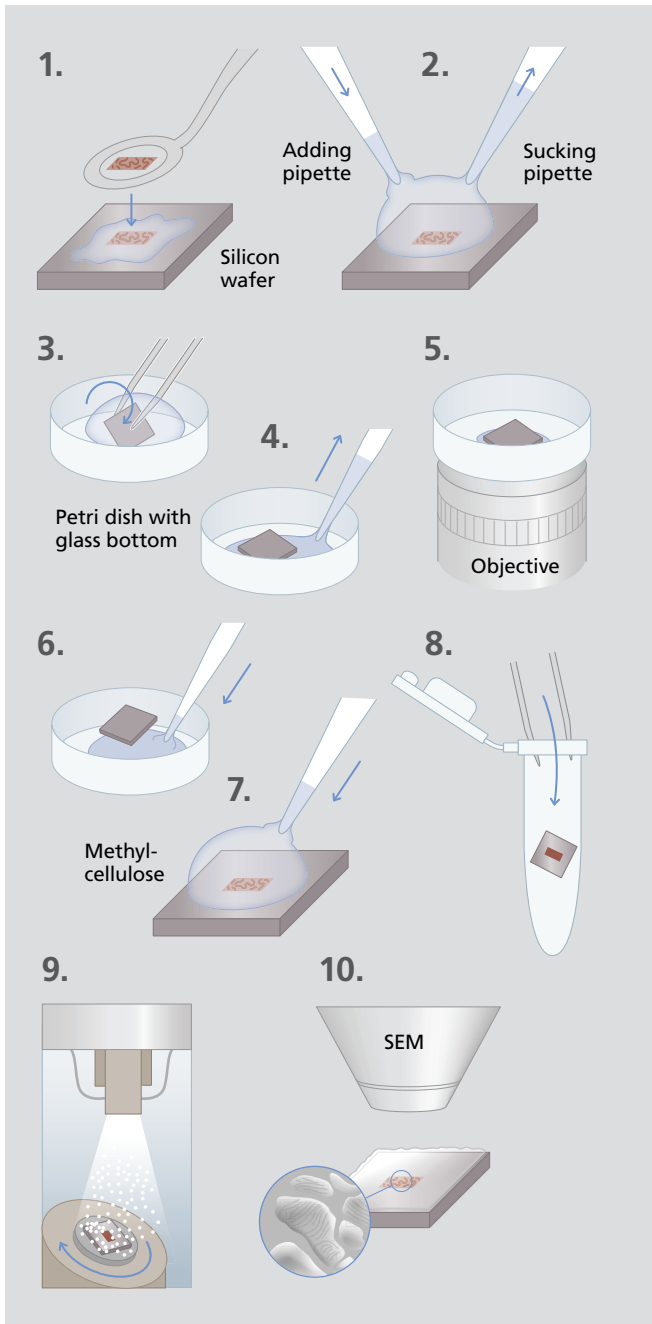
Scale bars:  
a: 1  $\mu\text{m}$ ; c: 2  $\mu\text{m}$   
d: 1  $\mu\text{m}$ ; b, e, g: 0.5  $\mu\text{m}$

Mateos et al., Sci. Rep. 6 34062  
(2016) is licensed under CC BY 4.0.



# Swiss Diamond Knives

## cryo immuno



Figs. 1 – 10:

Preparation procedure to gain topographic contrast of ultrathin cryo sections for correlative super-resolution light and electron microscopy. Design work produced by T. Gschwend, Multimedia and E-Learning Services, University of Zurich.

Knife type	Knife angle	Size [mm]	Thickness range [nm]	Boat type	Code	Application
cryo immuno	35°	2.0 3.0	30 – 300	Triangular holder	DCIMM3520 DCIMM3530	Sucrose infiltrated samples (Tokuyasu)